

English



Content

Exam

Staff

Careers

Pupil
view

Video

English Language

This course allows you to investigate, examine and create a wide range of texts for different audiences and purposes.

You will learn to communicate effectively, using speaking and listening, reading and writing skills.

These are the
themes we explore
while developing
our oracy, reading
and writing skills.

Wales

Leisure

Citizenship

World of
Work

World of
Science &
Technology

Content

Exam

Staff

Careers

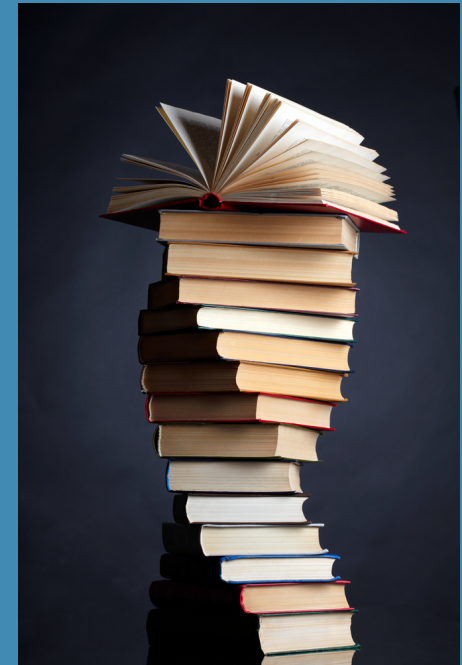
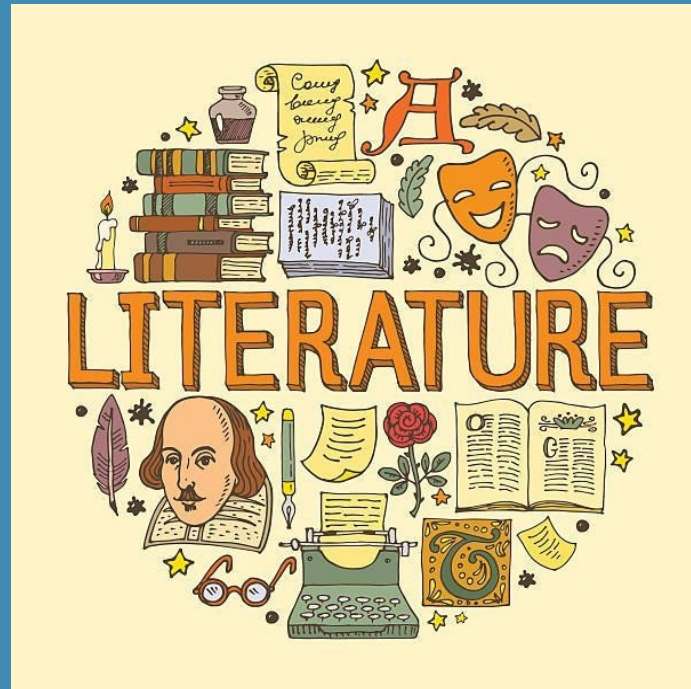
Pupil
view

Video

English Literature

This course focuses on developing your **reading** skills.

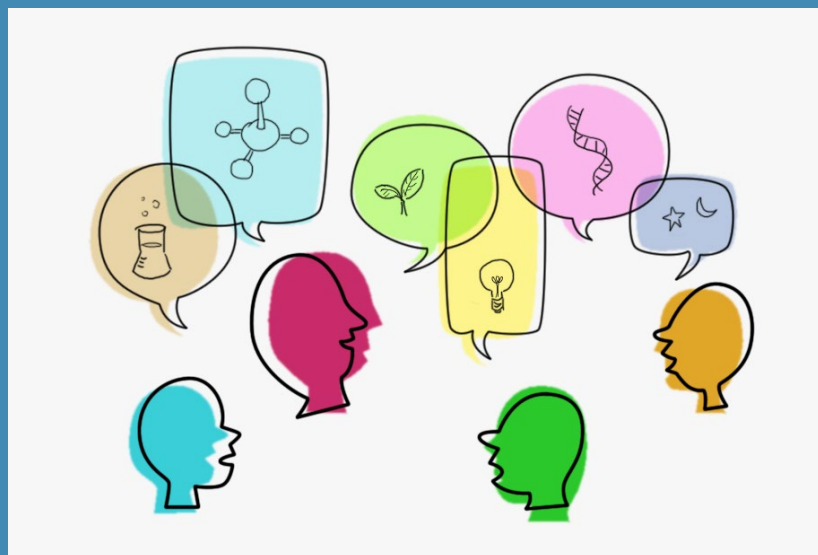
It will allow you to explore, analyse and compare a range of fiction texts, through the study of poetry, novels and plays.



Entry Level in English

Some learners will study for an Entry Level certificate in English, sometimes as a 'stepping stone' to GCSE.

This course, like GCSE English Language, helps you to develop **oracy, reading and writing** skills. But it will focus on those communication skills you will need in everyday life, the world of work and in other curriculum areas.



English Language

The course is divided into three units:. Two of these are assessed as external written exams; and one takes the form of controlled assessment.

Unit 1 Oracy (NEA) – an Individual Researched Presentation and a Group Discussion. (20%)

Unit 2 Description, Narration and Exposition (exam) – assessing reading and writing skills. (40%)

Unit 3 Argumentation, Persuasion and Instruction (exam) – assessing reading and writing skills. (40%)



Exam

English Literature

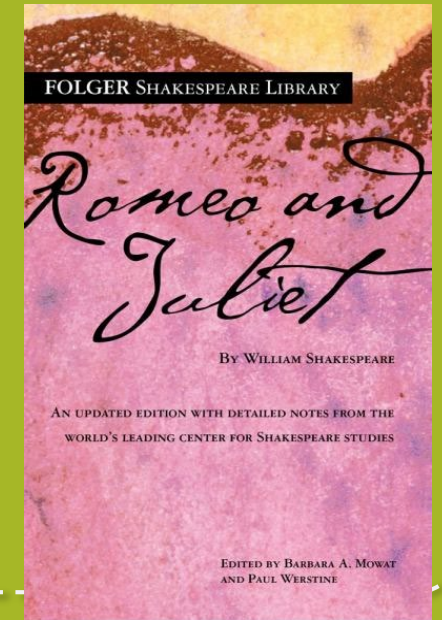
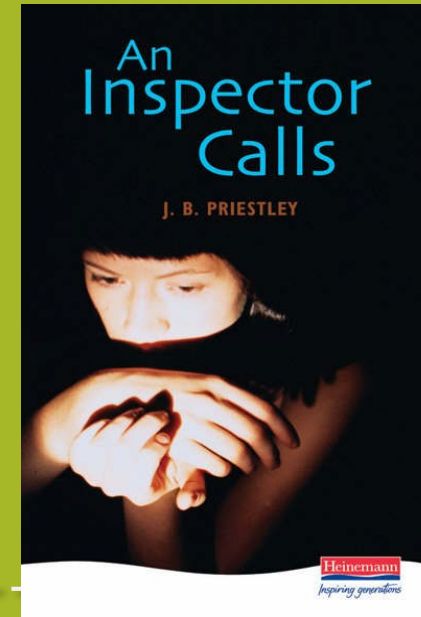
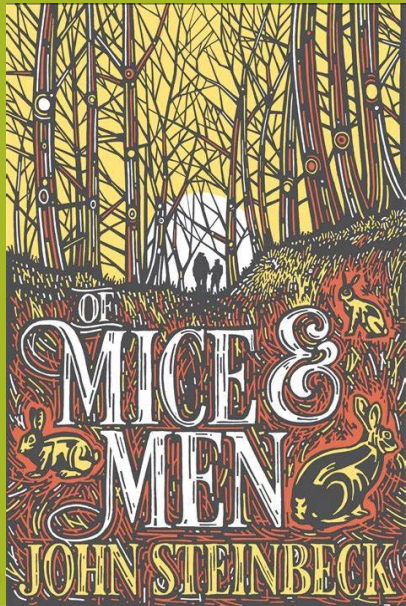
The course is divided into three units:

Unit 1 Different Cultures Prose and Contemporary Poetry (exam) – assessing knowledge and understanding of a novel, and the ability to analyse and compare poems. (35%)

Unit 2 Literary Heritage Drama and Contemporary Prose (exam) – assessing knowledge and understanding of a novel and play. (40%)

Unit 3 Shakespeare and Welsh Writing in English (NEA) – an essay analysing and comparing two poems, and an essay analysing a Shakespeare play. (25%)

The assessment texts you will study may include:



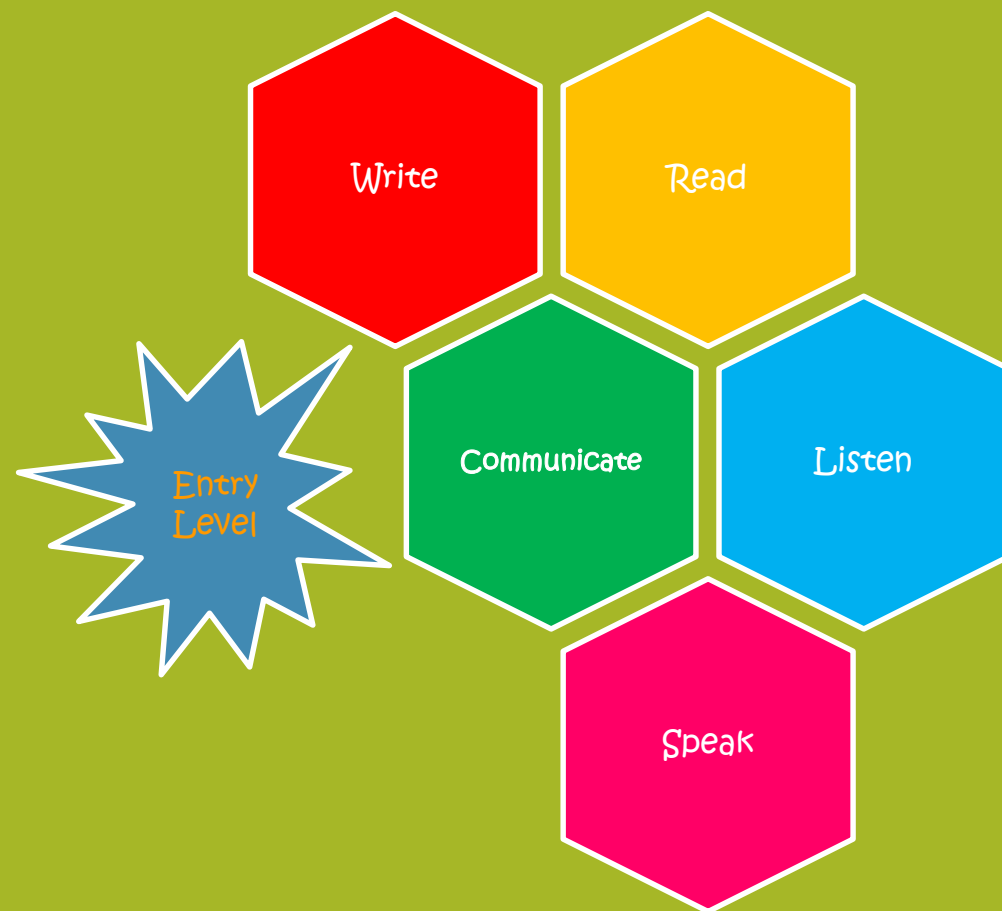
Entry Level in English

The course is divided into three components:

Component 1 Written exam – assessing understanding of non-literary reading, and the production of functional writing. (25%)

Component 2 Topic tests – assessing a response to literature, editing and sequencing, narrative writing and proofreading. (60%)

Component 3 Practical assessment – communicating a point of view, and using oracy for the world of work. (15%)



Staff



Mrs. S. Kelso



Dr. C. Mills



Miss. D. Lightfoot



Mrs. R. Fender



Mr. B. Gibbon



Staff



Mrs. L. Chilcott



Mrs. E. Phillips



Ms. E. Kovacs



Ms. F. Goss



English?
Who needs that?
I'm never going to England.

~ Homer Simpson



Careers

English allows you to develop essential **analysis**, **creativity** and **communication skills**.

It opens the door to a vast range of career options.

Love the Arts? There are lots of opportunities in media, broadcasting, publishing and arts management.

Enjoy a good debate? You can use your rhetorical skills in the fields of law, politics, governmental and business roles.

In fact, what career *wouldn't* value the range of skills English has to offer?

Actor

Digital marketer

Counsellor

Vlogger

Copy editor

Copywriter

Games developer

Reporter

Journalist

Arts administrator

Marketing executive

Producer

Researcher

Barrister/
Solicitor

Press officer

Author

Librarian

Speech and
Language therapist

Teacher

Screen-
writer

Pupil views

The English
Department really
do want all of their
students to
succeed.

Studying English has
helped me find my
voice.

English lessons give
me skills I plan to
use for the rest of
my life.

English is
challenging – but it's
fun to be
challenged.

I am learning to
communicate
confidently with
others.

There's a lot more
to it than just
sitting around
talking about old
books.

Other views

"Words are sacred. They deserve respect. If you get the right ones, in the right order, you can nudge the world a little."

Tom Stoppard

“READING

is the sole means by which *we* slip,

— INVOLUNTARILY, —

often helplessly, into another's skin,
another's voice, another's soul.”

— Joyce Carol Oates

Books Rock! parajunkee.com

Literature is the
immortality of speech.

August Wilhelm von Schlegel

A word after a word
after a word is power.

Margaret Atwood

A writer is a world
trapped in a person.

VICTOR HUGO

 Goins Writer

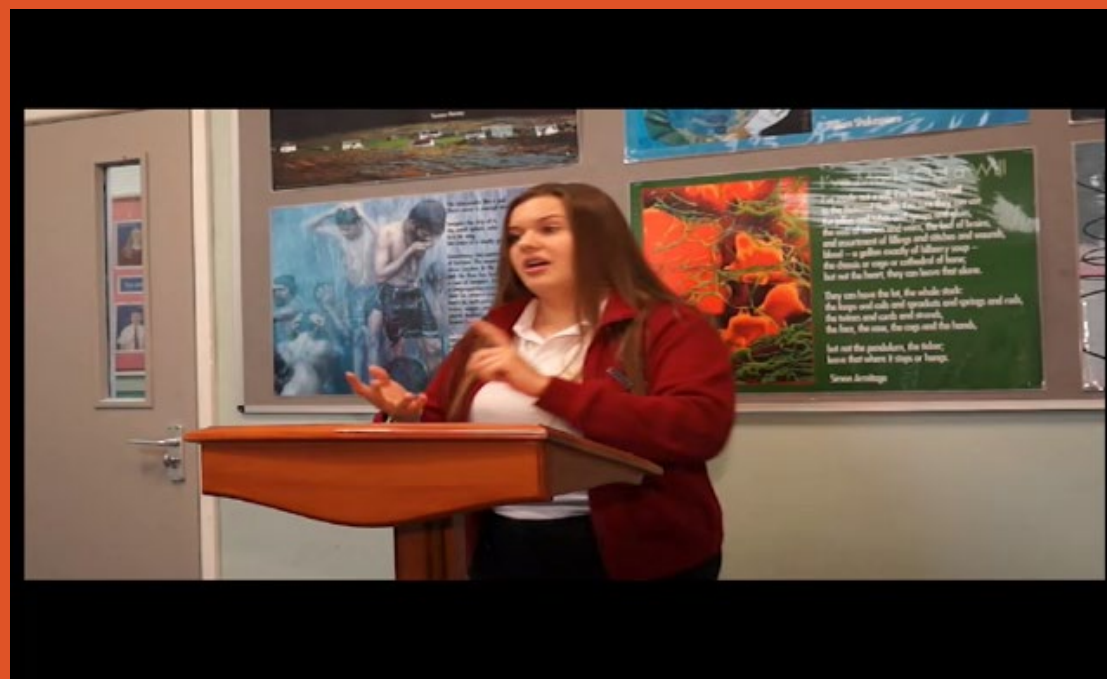
Reading is everything...

Here, a group of Year 11 pupils discuss the importance of libraries, and demonstrate the GCSE English Language skills of 'interacting and responding' (assessed on the 'group discussion' NEA).



Speaking and listening forms 20% of the English Language GCSE.

Watch an example of a GCSE individual researched presentation in action.



Shakespeare. An essential area of study as part of the English Literature course.

But is Shakespeare still relevant to our 21st century learners?

In this TED talk, John Bolton argues the case for Shakespeare's place in the modern world.

A life in books.

Cefn Saeson's Dr Mills walks us through some of the books that have been an essential part of her learning journey and that have inspired a lifelong love of reading.

