

# BTEC First Certificate in Construction

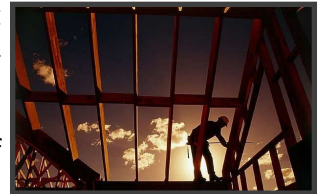


## Key features of the BTEC in Construction

The BTEC Firsts in Construction are work related qualifications reflecting the knowledge, skills and understanding required in the sector and are designed to focus on:



- Providing opportunities for learners and employees to achieve a nationally recognised Level 2 vocationally specific construction qualification
- Providing opportunities for learners to prepare for entry into employment, to work towards the achievement of an apprenticeship in the construction sector or to progress to further education vocational qualifications such as the Edexcel Level 3 BTEC Nationals in Construction, Civil Engineering or Building Services Engineering or a Level 3 NVQ.
- Providing education and training in craft, technical and operative areas that are directly relevant to the changing needs of construction employees, employers and professions.
- Providing learners with knowledge and understanding of the key issues of sustainability and health, safety and welfare in the construction industry.
- Providing opportunities for learners to develop a range of skills and techniques, personal qualities and attitudes essential for successful performance in working life.



## BTEC in construction

The construction industry continues to experience manpower shortages through the skills range, and potential new entrants to the industry need to be given every encouragement. The BTEC Firsts provide a specialist work related and motivating programme of study. They address the key areas of knowledge, understanding and skills required for learners contemplating a career within the construction industry. The requirements of craft, operative and technician roles are reflected in the content, and focus is placed on learner progression into work, to an apprenticeship, or on to further study.

## Structure of the qualification

### Edexcel Level 2 BTEC First Certificate Specialist Course

The Edexcel level 2 BTEC Specialist Certificate in Construction consists of 3 units, that provide for a combined total of 90 guided learning hours (GLH) for the completed qualification.



Unit	Units	GLH	Level
9	Performing Joinery Operations	30	2
10	Performing Carpentry Operations	30	2
15	Performing Paperhanging Operations	30	2