

## Details at a Glance

Qualification

GCSE

Level

1 & 2

Exam Board

WJEC

Tiered

No

Limited Group size

Yes

## Staff

Mrs B Lougher

## Course Structure

This WJEC course provides pupils with a keen interest in sport to combine physical and academic skills to obtain a GCSE qualification. The course aims to:

- Develop and apply knowledge, skills and understanding of physical education through selected practical activities
- Promote an understanding of the health benefits and risks associated with taking part in physical activity
- Develop skills necessary to analyse and improve performance.

## Examination/ Assessment

### **Unit 1: Theory**

Factors affecting exercise, performance, health, well-being and lifestyle choices.

**Written paper (11/2 hours) 100 marks**

- **Section A (20%)**

Compulsory questions to test knowledge and understanding of physical fitness, its assessment and factors affecting participation, provision and performance in sporting, health and well-being activities. This will be assessed through a series of short answer and extended writing questions.

- **Section B (20%)**

Compulsory questions to test knowledge and understanding of physical, psychological and tactical/technical factors that have an influence on performance, health and wellbeing. This will be assessed through a combination of short answer and extended writing questions. This examination will be available either as an electronic assessment or as a traditional written paper.

### **Unit 2: Practical**

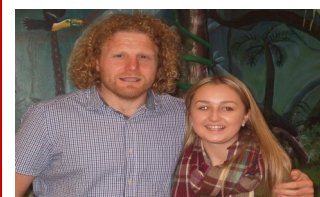
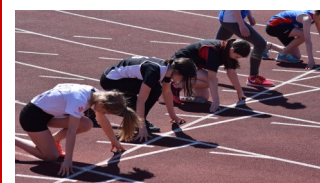
Performance in Physical Education.

**Practical Controlled Assessment (60%) 120 MARKS**

Four practical activities are assessed from the following: soccer, rugby, netball, hockey, badminton, rounders, gymnastics, rock climbing and athletics. Candidates may also be assessed in an activity that is coached out of school. For example, boxing, judo, karate, dance, swimming or trampolining.

### **Pathways**

Many higher education and career opportunities are available following qualifications gained in physical education - teaching, sports administration, physiotherapy, remedial gymnast, sports injury, leisure industry and the forces.



**Examination Board Website -**

<http://www.wjec.co.uk/qualifications/physical-education/physical-education-gcse/>