

Details at a Glance

Qualification

GCSE

Level

1 & 2

Exam Board

WJEC

Tiered

No

Limited Group size

Yes

Staff

Mr M McCarthy

Mrs B Lougher

Course Structure

This WJEC course provides pupils with a keen interest in sport to combine physical and academic skills to obtain a GCSE qualification. The course aims to:

- Develop and apply knowledge, skills and understanding of physical education through selected practical activities
- Promote an understanding of the health benefits and risks associated with taking part in physical activity
- Develop skills necessary to analyse and improve performance.

Examination/ Assessment

Unit 1: Theory

Factors affecting exercise, performance, health, well-being and lifestyle choices.

Written paper (11/2 hours) 100 marks

- **Section A (20%)**

Compulsory questions to test knowledge and understanding of physical fitness, its assessment and factors affecting participation, provision and performance in sporting, health and well-being activities. This will be assessed through a series of short answer and extended writing questions.

- **Section B (20%)**

Compulsory questions to test knowledge and understanding of physical, psychological and tactical/technical factors that have an influence on performance, health and wellbeing.

This will be assessed through a combination of short answer and extended writing questions. This examination will be available either as an electronic assessment or as a traditional written paper.

Unit 2: Practical

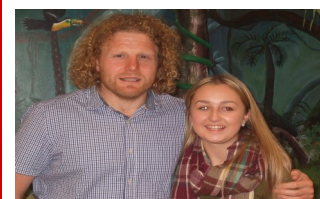
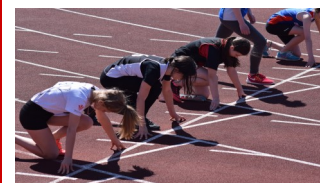
Performance in Physical Education.

Practical Controlled Assessment (60%) 120 MARKS

Four practical activities are assessed from the following: soccer, rugby, netball, hockey, badminton, rounders, gymnastics, rock climbing and athletics. Candidates may also be assessed in an activity that is coached out of school. For example, boxing, judo, karate, dance, swimming or trampolining.

Pathways

Many higher education and career opportunities are available following qualifications gained in physical education - teaching, sports administration, physiotherapy, remedial gymnast, sports injury, leisure industry and the forces.



Examination Board Website -

<http://www.wjec.co.uk/qualifications/physical-education/physical-education-gcse/>